

**Description:**

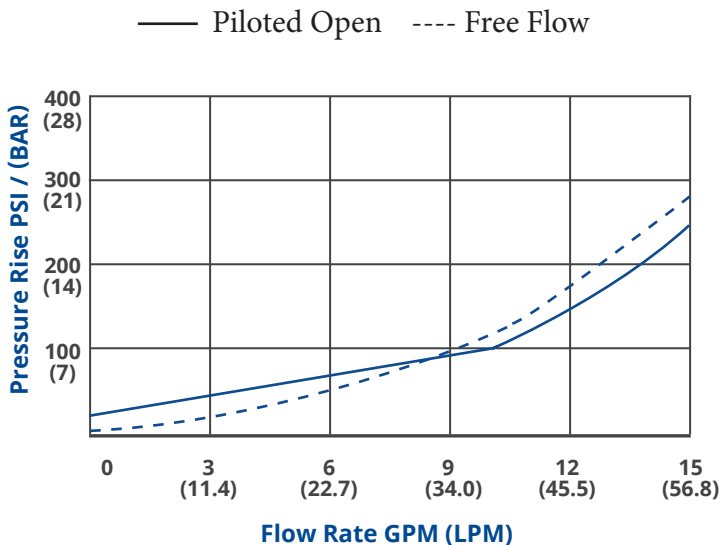
Cartridge style counterbalance valves with an internally vented spring chamber and a reverse flow check. Intended for use as a motion control and over-center load holding valve.

**Features:**

- Common pilot ratios 2.3:1, 4:1, 4.5:1, 10:1
- Leak proof adjustment screw
- Quiet stable operation
- Low hysteresis
- Zinc plated exposed steel parts
- Anodized aluminum body for corrosion protection
- Standard setting is 3000 PSI

*(Other settings can be specified, see model code on back.)*

**Flow Characteristics (32 CST / 150 SUS oil at 40C)**



**Specifications:**

|                                  |   |
|----------------------------------|---|
| Maximum pressure (Aluminum body) | 3000 PSI (207 BAR)                      |
| Maximum setting                  | 5000 PSI (345 BAR)                      |
| Maximum flow                     | 15 GPM (57 LPM)                         |
| Port size                        | SAE -08                                 |
| Body material                    | Aluminum                                |
| Filtration                       | ISO 4406                                |
| Fluids                           | Mineral based or synthetics 50-2000 SUS |
| Approx. Weight                   | 3.2 Lbs.                                |

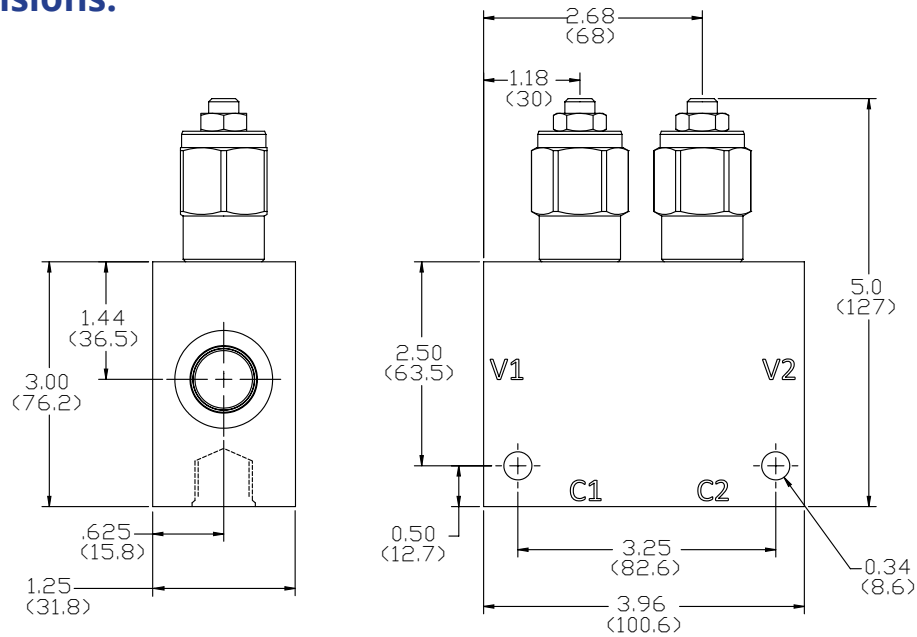
The data and application materials contained herein are furnished for information only and believed to be reliable. Questions regarding specific applications or performance should be directed to JEM's application department. Since our products are being continuously improved, data contained herein is subject to change without notice. Warranty on FastLine products is 1 year from the date of sale.

**JEM Technical**  
(888) 256-8266  
[www.jemtechnical.com](http://www.jemtechnical.com)



**JEM Technical Canada Ltd.**  
(204) 654-1743  
[www.jemtechnical.ca](http://www.jemtechnical.ca)

**Installation Dimensions:**



( ) Parentheses = Millimeters

**How To Order:**

 Example model code is the in-stock FastLine solution

**DCBV20M A - 408T \_ \_ - 4 - 30 - 30**

**Base Part No.**

**4 Ports**  
Size SAE 08

**Pilot Ratio:**

2 = 2.3:1  
4 = 4:1  
4 = 4.5:1  
10 = 10:1

**CBV2 Setting PSI ÷ 100**

**CBV1 Setting PSI ÷ 100**  
Std. adjustment range: 500-5000 PSI

**Adjustment Type:**  
A = Hex Allen Head

**Body Material:**  
Omit = Aluminum  
D = Ductile \*

**Seal Type:**  
Omit = Buna N  
V = Fluorocarbon\*\*

Not all Pilot ratios are available from stock. 4:1 ratio is the standard offering.  
\* Ductile bodies have limited availability. Ductile bodies are recommended for working pressures over 3000 PSI.  
\*\* Fluorocarbon seals are used when temperatures exceed 212° F (100° C).

**Typical Application**

