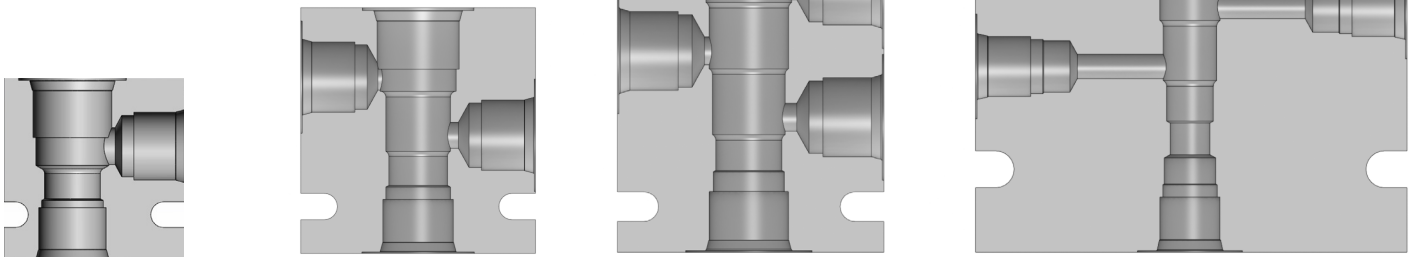
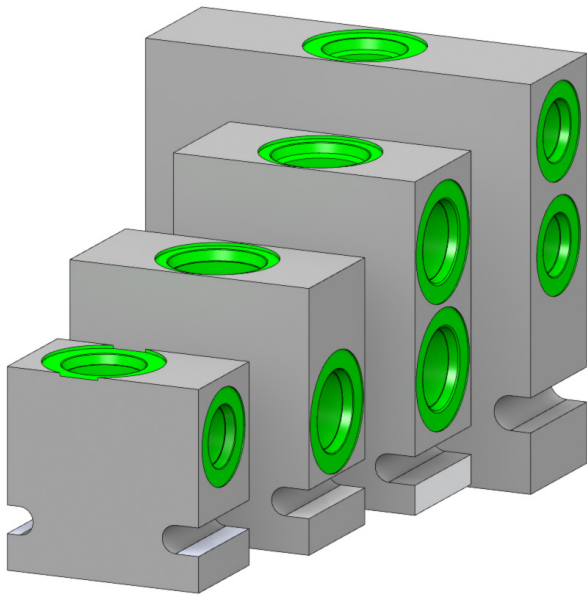


**Description:**

Single cartridge manifold bodies for common cavity cartridge valves. Typical use is line mounted circuits

**Features:**

- SAE O-ring ports
- Anodized aluminum body for corrosion protection
- Cavities based on HydraForce dimensions
- Standard rated pressure is 3000 PSI



2 way body

3 way body

4 way body

5 way body

**How To Order:**

 Example model code is an in-stock FastLine solution

**SCB 10 - 2 - 08T**

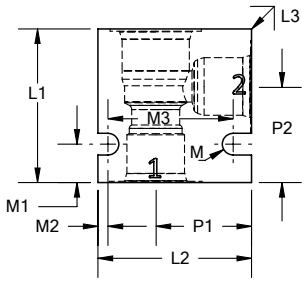
<p>Base Part No.</p> <p><u>Cavity size:</u></p> <p>* FC06 = 06</p> <p>VC08 = 08</p> <p>VC10 = 10</p> <p>VC12 = 12</p> <p>VC16 = 16</p> <p>VC20 = 20</p>	<p><u>Cavity steps:</u></p> <p>2 = 2 way</p> <p>3 = 3 way</p> <p>4 = 4 way</p> <p>5 = 5 way</p> <p>6 = 6 way</p>	<p><u>Body Material:</u></p> <p>Omit = Aluminum</p> <p>D = Ductile **</p> <p><u>Work Port Size:</u></p> <p>04T = SAE 04, Standard for VC06</p> <p>06T = SAE 06, Standard for VC08</p> <p>08T = SAE 08, Standard for VC10</p> <p>10T = SAE 10</p> <p>12T = SAE 12, Standard for VC12</p> <p>16T = SAE 16, Standard for VC16</p> <p>20T = SAE 20, Standard for VC20</p>
---	--	---

Not all combinations are available as standard bodies. Mounting holes may vary with cavity or port size  
 \*Not A HydraForce comon cavity. Fits FC06 cavity  
 \*\*Ductile bodies have limited availability. Ductile bodies are recommended for working pressures over 3000 PSI.

**JEM Technical**  
(888) 256-8266  
[www.jemtechnical.com](http://www.jemtechnical.com)



**JEM Technical Canada Ltd.**  
(204) 654-1743  
[www.jemtechnical.ca](http://www.jemtechnical.ca)



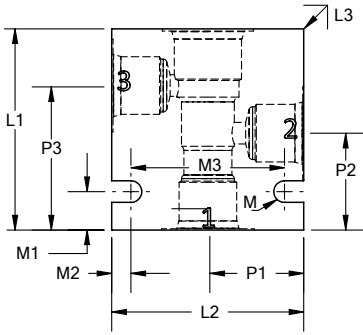
Body	SCB06-2	SCB08-2	SCB10-2	SCB12-2	SCB16-2	SCB20-2
L1	1.75 (44.5)	2.00 (50.8)	2.00 (50.8)	3.00 (76.2)	3.00 (76.2)	4.00 (101.6)
L2	1.75 (44.5)	2.00 (50.8)	2.00 (50.8)	3.00 (76.2)	3.00 (76.2)	4.00 (101.6)
L3	0.75 (19.0)	1.13 (28.7)	1.25 (31.8)	2.00 (50.8)	2.00 (50.8)	3.00 (76.2)
MØ	0.2 (5.0)	Ø 0.28 (7.1)	Ø 0.28 (7.1)	Ø 0.34 (8.6)	Ø 0.34 (8.6)	Ø 0.34 (8.6)
M1	0.25 (6.4)	0.50 (12.7)	0.50 (12.7)	0.75 (19.1)	0.75 (12.7)	0.75 (12.7)
M2	0.19 (4.8)	0.13 (3.3)	0.13 (3.3)	0.16 (4.1)	0.16 (4.1)	0.19 (4.8)
M3	1.25 (31.8)	1.63 (41.4)	1.63 (41.4)	2.56 (65.0)	2.56 (65.0)	3.63 (92.1)
P1	1.05 (26.7)	1.25 (31.75)	1.25 (31.75)	1.88 (47.8)	1.88 (47.8)	2.44 (62.0)
P2	1.2 (30.5)	1.4 (35.6)	1.25 (31.75)	1.94 (49.3)	2.00 (50.8)	2.72 (69.1)

( ) Parentheses = Millimeters

All ports are in the center of the body

SCB06 bodies do accept HydraForce cartridges

Ductile bodies may be dimensionally different



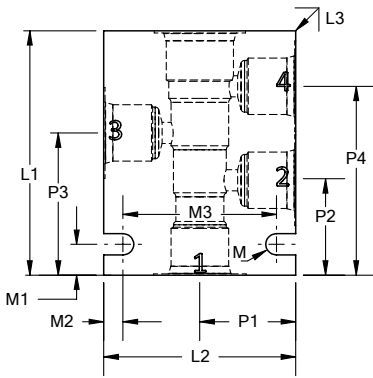
Body	SCB06-3	SCB08-3	SCB10-3	SCB12-3	SCB16-3
L1	2.00 (50.8)	2.62 (66.5)	2.62 (66.5)	4.00 (101.6)	5.00 (127.0)
L2	2.00 (50.8)	2.50 (63.5)	2.50 (63.5)	4.00 (101.6)	4.00 (101.6)
L3	1.00 (25.4)	1.13 (28.7)	1.25 (31.8)	2.00 (50.8)	2.00 (50.8)
MØ	0.2 (5.0)	Ø 0.28 (7.1)	Ø 0.28 (7.1)	Ø 0.34 (8.6)	Ø 0.34 (8.6)
M1	0.25 (6.4)	0.50 (12.7)	0.50 (12.7)	0.75 (19.1)	0.62 (15.7)
M2	0.13 (3.3)	0.25 (6.4)	0.25 (6.4)	0.19 (4.8)	0.18 (4.8)
M3	1.5 (44.5)	2.00 (50.8)	2.00 (50.8)	3.63 (92.1)	3.63 (92.1)
P1	1.00 (25.4)	1.25 (31.8)	1.25 (31.8)	2.00 (50.8)	2.00 (50.8)
P2	1.05 (26.7)	1.45 (36.8)	1.26 (32.0)	1.88 (47.8)	2.87 (72.9)
P3	1.45 (36.8)	2.02 (51.3)	1.88 (47.8)	2.85 (72.4)	4.00 (101.6)

( ) Parentheses = Millimeters

All ports are in the center of the body

SCB06 bodies do accept HydraForce cartridges

Ductile bodies may be dimensionally different

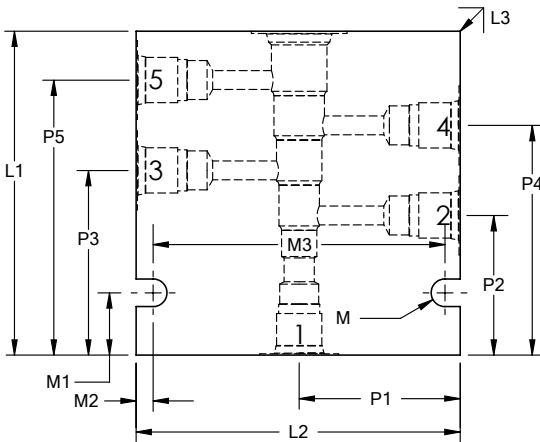


Body	SCB08-4	SCB10-4	SCB12-4	SCB16-4
L1	3.25 (82.6)	3.25 (82.6)	5.00 (127.0)	5.00 (127.0)
L2	2.50 (63.5)	2.50 (63.5)	4.00 (101.6)	4.00 (101.6)
L3	1.13 (28.7)	1.25 (31.8)	2.00 (50.8)	2.00 (50.8)
MØ	Ø 0.28 (7.1)	Ø 0.28 (7.1)	Ø 0.34 (8.6)	Ø 0.34 (8.6)
M1	0.41 (10.4)	0.41 (10.4)	0.62 (15.7)	0.62 (15.7)
M2	0.25 (6.4)	0.25 (6.4)	0.19 (4.8)	0.19 (4.8)
M3	2.00 (50.8)	2.00 (50.8)	3.63 (92.1)	3.63 (92.1)
P1	1.25 (31.8)	1.25 (31.8)	2.00 (50.8)	2.00 (50.8)
P2	1.52 (38.6)	1.26 (32.0)	1.91 (48.5)	1.75 (44.5)
P3	2.08 (52.8)	1.89 (48.0)	2.88 (73.2)	2.88 (73.2)
P4	2.65 (67.3)	2.51 (63.8)	3.85 (97.8)	4.00 (101.6)

( ) Parentheses = Millimeters

All ports are in the center of the body.

Ductile bodies are dimensionally different.



Body	SCB08-5	SCB10-5
L1	4.05 (102.0)	5.00 (127)
L2	4.05 (102.0)	4.00 (101.6)
L3	1.27 (32.3)	1.50 (38.1)
MØ	Ø 0.34 (8.7)	Ø 0.34 (8.7)
M1	0.80 (20.3)	0.62 (15.7)
M2	0.19 (4.8)	0.19 (4.8)
M3	3.63 (92.1)	3.63 (92.1)
P1	2.00 (50.8)	2.00 (50.8)
P2	1.76 (44.7)	2.38 (60.5)
P3	2.32 (58.9)	3.01 (76.5)
P4	2.88 (7.3)	3.64 (92.5)
P5	3.44 (87.4)	4.25 (107.9)

( ) Parentheses = Millimeters

All ports are in the center of the body.

The data and application materials contained herein are furnished for information only and believed to be reliable. Questions regarding specific applications or performance should be directed to JEM's application department. Since our products are being continuously improved, data contained herein is subject to change without notice. Warranty on FastLine products is 1 year from the date of sale.